



# Orchestrator

Installation Notes  
For  
Version 3.1



## To Install the Orchestrator Software from CD

### Please also refer to the Orchestrator User Guide

When the CD has been inserted into your system, it should have autorun to a “CD Contents” Page. If it did not, please use run the **cd\_contents.htm** file in the root directory of the CD. This screen contains links to all the relevant documents & manuals in Adobe Acrobat format as well as the installation programs for the purchased software.

If it does not, then manual's/documents are held in the “Documents” directory, while the software is held in the “Issue Disks” directory.

#### IMPORTANT NOTES:

- To install Orchestrator you need to be logged in with Administrator privileges.
- Close all non-essential programs, including MS Office Toolbar if installed. (If problems occur during installation, it is worth temporarily disabling Anti-virus programs as these sometimes use files that would need updating).
- This version no longer supports Windows 95/98 or Windows NT. It only runs on Windows 2000/XP/2003.

#### Orchestrator as standard is Software Secured (locked to the system hard disk).

An option of using a Hardware key (which fits into your PC Parallel port) is available. If you plan to change the computer or hard disk regularly for any reason, a hardware key is recommended. Another advantage of a hardware key is that, you will not be asked to enter any codes during the install procedure.

If your system does not have a parallel port or if it is more convenient, a USB hardware key is also now available. We would recommend however that the USB key is secured to the system for everyday use.

#### Software Secured –

During the installation of the software you will be asked for an Unlock Code. To save time, we recommend that a program called “Generate Lock Code” is run before attempting an install.

This can be run from the HTML screen or it can be found in “Issue Disks/Server/Disk1”.

When running this facility, if “DiskID” is selected and then the “Generate Lock Code” button is pressed, a Lock Code is returned (normally 8 digits).



Then contact Measurement Systems (preferably via e-mail to [support@msl-datascan.com](mailto:support@msl-datascan.com) to reduce the chances of errors occurring), with this "Lock Code" and the details of the product you have ordered e.g. Orchestrator 32, 64 etc. You will then receive a response detailing the 12-letter un-lock code. This is the code you need to enter when prompted during the Orchestrator install.

**NOTE:**

If you have also ordered an add-on product such as Internet Server, ODBC driver, OPC Server etc. and your Orchestrator is software secured, then additional Unlock Codes will be required for each add-on product. Use the "generate lock code" facility to confirm the lock code.

This lock code produced by this software utility however remains the same for each add-on product.

Unlock codes can be issued for all products ordered when MSL are contacted for the Orchestrator Server Unlock code.

**Hardware Secured –**

If a Parallel port hardware key has been ordered, then please ensure this is fitted to the parallel port of your computer (with the PC Powered OFF). If you are using Windows NT/2000 or XP, you will need to install the sentinel driver. You will be asked during the installation whether you wish to do this.

**If a USB Hardware key has been purchased, please read the "Server Installation" section of the Orchestrator User Guide before attempting to install.**

**INSTALLATION**

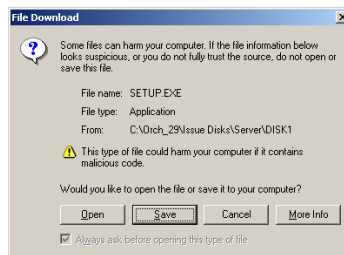
Please note, the Server software **must** be installed before any add-ons. Also the parallel port must not be set to Bi-Directional Mode.



By clicking on the link to install the Orchestrator Server software, you will be taken to the install screen as shown below.



The HTML screens will run the setup and you just need to answer the questions. If you do not have a Hardware Key, you will be asked for an Unlock code as detailed above. However, after you have clicked on the link to Install the relevant Server software, the following will appear.



Choose **“Open”**. The path to the setup file will be different from that above, instead of C:\Orc\_29 will be the Driver Identifier for your CD..

Setup will then continue. The above screen is unique to the Installation from the HTML file.

When you arrive at the Licence Agreement screen, scroll to the bottom of this screen to activate the **“I Agree”** button. After this, follow the prompts until the installation is complete.